

Local Action Plan (LAP) - report for Council meeting 5th September 2018

Background

- 2006 LAP¹ was produced after a comprehensive parish survey was carried out. The LAP identified several areas for improvement in the parish, and as a result several projects were undertaken
- 2007 LAP update² was produced
- 2008 LAP update³ was produced
- 2009 LAP update⁴ was produced
- 2010 LAP update⁵ was produced
- Since 2010 no formal review of the LAP has been undertaken. Some of the projects identified have now been completed, and several continue to be successful e.g. Youth Club, The Hub and Village tidies.

Is it time for a new Local Action Plan?

In April 2018 Council approved a new LAP as part of its 12 month action plan⁶. The objectives are to:

- Establish what the issues are that concern residents
- Establish what the community would like to see happen in the village
- Raise the profile of the Council
- Improve community engagement⁷
- Establish Council's vision and objectives

Actions required:

- Community questionnaire
- Ask if residents would be prepared for an increase in precept to pay for additional services e.g. community warden, traffic calming, grass cutting etc
- Write plan
- Create 3 year business plan (to be reviewed annually)

Kate Darbyshire
Westfield Parish Council Clerk & RFO
4th September 2018

¹ Appendix 1 – LAP 2006

² Appendix 2 – LAP update 2007

³ Appendix 3 – LAP update 2008

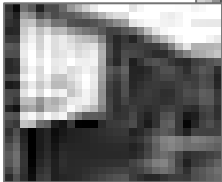
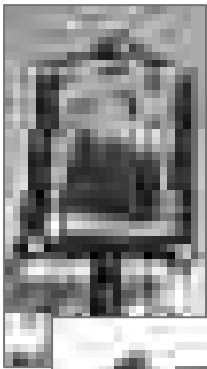
⁴ Appendix 4 – LAP update 2009

⁵ Appendix 5 – LAP update 2010

⁶ Appendix 6 – Council's Action Plan April 2018 to March 2019

⁷ Appendix 7 – Clerk's completed CiLCA assignment on the impact of positive community engagement

**WESTFIELD
PARISH SURVEY
&
ACTION PLAN
2006**



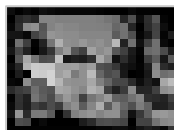
Working together to build a better community



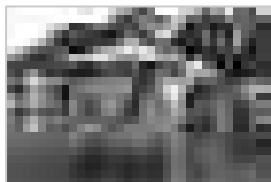
Westfield Today

Westfield is a rural parish in Rother District, situated approximately 4 miles north of Hastings along the A28. We have around 1200 varied homes. The oldest is 16th century and new houses have been built throughout the years up to the current time. They vary in style from Tudor timbered and white-washed post-war to modern brick built, and vary in purpose from starter homes and flats to larger family houses and farms.

Our thriving community benefits from a **primary school** which currently has 213 pupils. Recent major building works have provided new classrooms, a new canteen and an IT area. Older children attend Claverham Community College in Battle, or Robertsbridge Community College. There is sixth form provision at Bexhill College or in Hastings. We also have an active and well attended **church**. The earliest parts of the church are Norman. This beautiful building with its old lych-gate and the well tended war memorial form the first view of the village when approaching from the south. Our **doctors' surgery** has three full-time and one part-time doctor as well as practice nurses, a dispensary and excellent support staff.



The **commercial life** of Westfield is served by six village centre shops (car sales, butchers, newsagents, hair and beauty salons, and a general store), a farm shop, a dairy shop, two public houses, a restaurant, coach operators, a vineyard, taxi services and a small business park.



Community events and local clubs use the varied recreational facilities. We have two good standard halls, a parish field used predominantly for football and stool ball, a cricket ground, scout HQ, recreational ground, bowling-green, tennis court and several play areas. There are well established activities for all ages and these include roller-booting,

fitness and slimming classes, mother & toddler and playgroup, horticultural society, WI, dance classes, drama and art groups, church choir, table tennis, bowls, football, tennis and cricket, cubs, scouts, guides and brownies.....and many more.

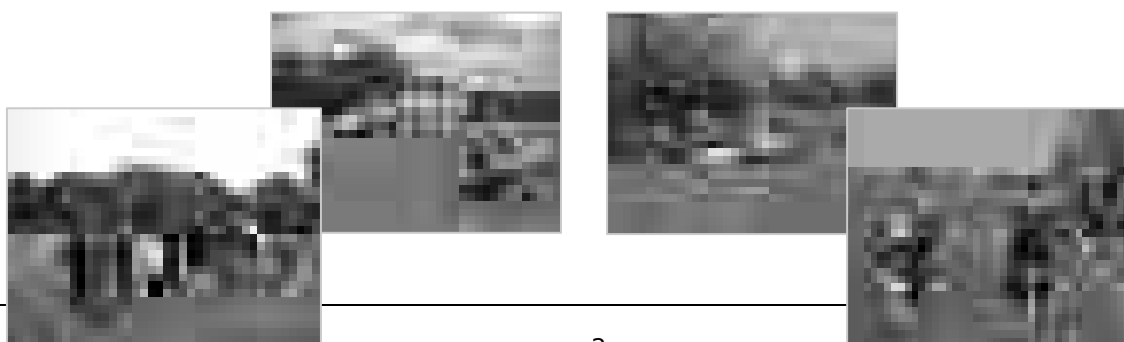


The Parish Council of 11 elected members meets every month and actively seeks to further the best interests of residents. At their Community Council meetings **Westfield Community Association** brings together around 20 individuals who represent local clubs, to discuss issues of mutual concern and local importance.

The last Census was in 2001 when our population was recorded as 2566, of which 1215 were male and 1351 female. Rother District Council estimates that by 2005 this total had risen to 2678. The census also gives the following residents' age profile:

1 to 4 years	5 to 15 years	16 to 24 years	25 to 44 years	45 to 64 years	65+ years
4.4%	15.3%	7.2%	21.1%	30.7%	21.2%

This snapshot gives a brief flavour of Westfield today. The vitality of our community is evidenced by the wealth and variety of activities organised by residents, the facilities they work to maintain, and the level of voluntary help given to so many organisations. There is something for everyone, and the enthusiasm of residents for getting involved augurs well for the success of our Parish Action Plan. Many hundreds have contributed in giving their opinions and formulating a way forward. Hopefully, many more will help to take these plans to completion.



What is a Parish Action Plan?

Village or Parish Action Plans are part of a government initiative to help rural communities map out their future by giving local people a chance to have their say on issues which are important to them.

How was it organised?

Following meetings in the Parish, a questionnaire was distributed to each household in March 2005. At the same time questionnaires were developed for our children and young people which they completed with the help of Claverham and Robertsbridge Community Colleges and Westfield Primary School.

There was an excellent response from the surveys which were then professionally analysed.

How were these actions chosen?

A group of volunteers met in July 2005 to consider the results and prioritise actions using the following criteria:

- A large proportion of respondents thought the action was needed
- The action will assist an important minority of residents (e.g. The elderly, the young)
- Very strong views were expressed on the matter

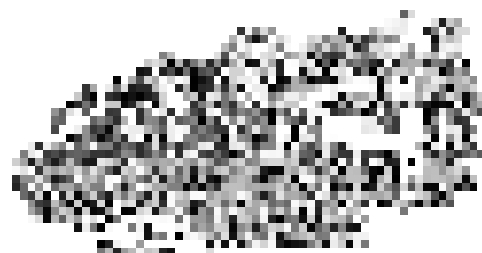
Our first Action Plan has been created from a community consultation. The process of planning actions derived from local opinion is an open one. More ideas and comments from any member of the community are important for our plans to grow and adapt in line with current local thinking. More volunteers to take the actions forward are especially welcome. The "How and When" these actions happen relies on involvement from local groups, organisations, businesses, interested individuals, our Parish Council and Community Association, the Police and local government agencies.

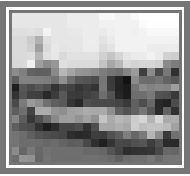


Contents

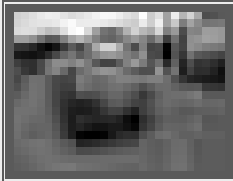
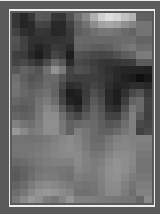
• Westfield Today	2
• <u>Action Plan</u>	
- Transport	4
- Housing	5
- Community Safety	6
- Environment	6
- Young People and Children	8
- Communication	9
- Recreation	9
- General Issues	10
• The Way Forward	10
• Results from the Questionnaire	11
• Acknowledgements	14
• Westfield Yesterday	15

Now read the Plan and tell us how YOU can help.



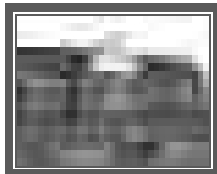


Transport

<p>Action: Explore the possibility of Green Lanes (ie 20mph & priority for walkers/cyclists/riders)</p> <p>Present findings to the Action group to discuss feasibility</p>	<p>Why: Our lanes are becoming increasingly busy; the safety of other road users is at risk. 54% of survey respondents (392 people) supported the idea of Green Lanes around Westfield</p>	<p>How:</p> <ul style="list-style-type: none"> • Look at Green Lane website for information • Discuss with others who have achieved this & present back any success stories and testimonials • Discuss with ESCC • Contact Council for the Protection of Rural England 	<p>Who by: Sue France</p>	<p>When By September 2006</p>
<p>Gather information about Public Transport and the long term strategy for the Parish</p> <p>Present findings to the Action Group to consider if further work is needed</p>	<p>24% of respondents (172 people) experienced problems with using public transport</p>	<ul style="list-style-type: none"> • Discussion/meeting with ESCC • Contact with Rural Transport Group to establish current times, charges and reliability 	<p>Maxine Betti</p>	<p>By September 2006</p>
<p>Find a solution to the village parking problems</p> 	<p>53% (389 people) identified car parking as a problem in the village. The most commonly identified sites were The Surgery, village halls and the roads around the school, especially at school drop-off and pick-up times</p>	<ul style="list-style-type: none"> • Explore the possibility/interest in Workhouse Lane becoming a one way street • Negotiate with Pub Owners to consider their car park to be used during school pickup/drop off times • Look at the feasibility of a walking bus for getting children to school 	<p>Kathryn Harrison; Parish Council; School; WCA; Those who volunteered for Walking Bus Scheme on "Getting Active Sheet"; PTA</p>	<p>By September 2006</p>
<p>Make pathways more accessible to allow people to walk into the village</p> 	<p>Comments were received about overgrown hedges and obstructed footways causing difficulties to pedestrians</p>	<ul style="list-style-type: none"> • Lobby ESCC to maintain footways • Consider action as part of the Spring Clean project 	<p>Westfield Parish Council ESCC Volunteers</p>	<p>Over the next year</p>

Transport (continued)

<p>Consider routes for cyclists:- a) Beggars Corner to The Plough- through Fish Ponds lane to Cricket ground, down drive to A28 (possible new roundabout), Mill Lane to Cottage Lane and along to Sedlescombe</p> <p>b) Link with Marsh Cycle routes via Doleham Halt (good train service). Make Doleham Lane, and Lower Lidham Hill Green Lanes</p>	<p>322 respondents declared that dangerous roads or lack of cycle paths prevent them cycling more</p>	<ul style="list-style-type: none"> • Lobby ESCC for local routes for cyclists. • Contact Sustrans • Cottage Lane and Mill Lane to become Green Lanes 	<p>Anne Norris Village Cyclists Sustrans</p>	<p>By spring 2007</p>
<p>Revisit a "Wheelies" type car service as BACT looks set to close down</p>	<p>To match identified travel needs of residents with those willing to help provide transport</p>	<ul style="list-style-type: none"> • Discuss with the Surgery • Find out how the service will be maintained in other areas 	<p>Local Champion Age Concern Dial a Ride Services</p>	<p>As soon as possible</p>



Housing

<p>Action: Ensure all new housing in the parish has a certain percentage available for Westfield families, such as the Westfield Down proposal – see under Recreation</p>	<p>Why: Most comments received were about already over-stretched infra structures and not wanting any further housing. If houses must be built, consideration should be given to current residents' needs (previous developments have resulted in an influx of people from outside the immediate area putting additional strain on services)</p>	<p>How:</p> <ul style="list-style-type: none"> • Discuss with Housing Associations and RDC 	<p>Who by: Parish Council</p>	<p>When During 2006</p>



Community Safety

Action:

Establish wider coverage of Neighbourhood Watch

Why:

51% of respondents already belong to a neighbourhood watch scheme. Of those who do not, many expressed an interest in knowing more

How:

- Suggest co-ordinators re-introduce themselves by issuing contact details within their assigned area.
- Continue to promote NHW by email (to join contact:- hastingsandrothernhw@sussex.pnn.police.uk)

Who by:

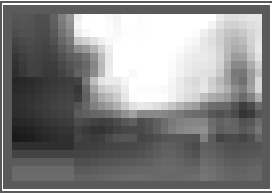
Neighbourhood watch by email organiser

NHW co-ordinators

All those who expressed interest in NHW on Getting Active Sheet

When

Summer 2006



Environment

This is a really important issue for most people. There is a need to keep our environment clean and pleasant and this will be an area where the parishioners can work together.

Action:

Organise a "Spring Clean" once or twice a year

Set up a system whereby people regularly do their own "patch"

Why:

There was a high level of support for all suggested remedies for tidying Westfield. 264 people favoured an annual or bi-annual community clean-up

How:

- Someone to initiate/set up
- Equipment (gloves, litter pickers etc from Council)
- Consider a BBQ to promote community spirit

Who by:

All those who volunteered on "Getting Active Sheet" WCA Parish Council Young People, Scouts, Other interested Residents

When

Ongoing each year, starting in Spring 2006

Tackle the Litter problem in the parish

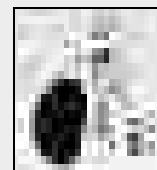


The litter problem was the most frequently indicated local environment issue



- Hold a Campaign at the school
- Animal shaped bins to encourage younger children
- More ordinary large bins
- Poster campaign
- Spring Clean/Working Parties
- Have a sponsored clean up

Headmaster of local school Parish Council Shop keepers & local businesses Scouts Guides and volunteers

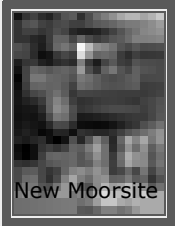
Following on from Spring Clean project



Environment (continued)

Action:	Why:	How:	Who by:	When
<p>Make sure the grass edges are not cut where it is safe to do so, to preserve orchids and wildlife</p>	<p>To preserve endangered flowers</p>	<ul style="list-style-type: none"> Residents to brief Parish Council to known orchid sites Council to brief contractors 	<p>Residents Parish Council</p>	<p>2006 -In time for next years cutting programme</p>
<p>Set up an additional more permanent recycling centre on a site to be identified to include tins/can recycling, garden waste composting and cardboard collection.</p>	<p>79% of respondents already use recycling facilities, but many commented on the limited range available within the Parish</p>	<ul style="list-style-type: none"> Negotiate with Rother District Council and the GP Surgery and the Down Project Sell can crushers locally Provide green bins for garden waste 	<p>Rother District Council Parish Council Residents</p>	<p>Within the next two years</p>
<p>Investigate more frequent bottle bank emptying or permanent bank as above</p> 	<p>See comments above</p>	<ul style="list-style-type: none"> Negotiate with RDC 	<p>Parish Council</p>	<p>ACHIEVED (A glass and plastic bottle bank now permanently sited at Churchfield)</p>
<p>Reduce local disturbance</p>	<p>8 potential causes of disturbance were listed in the survey. Of these, vandalism (61%), abandoned cars (33%) and traffic noise (25%) caused the most discomfort</p>	<ul style="list-style-type: none"> Publish environmental health dept contact numbers Publish advice on who to contact for abandoned cars Education for local youths on motorcycles Discussion with Youth Development Service on their involvement 	<p>Parish Council via Community Newsletter and website Someone to talk to local youths Youth club CPSO's</p>	<p>During 2006 Once someone is identified to talk to local youths</p>
<p>Explore changes needed to the way we deal with Dog Fouling</p> 	<p>60% of respondents expressed concern about dog fouling and 49% would like more dog waste bins</p>	<ul style="list-style-type: none"> Article in Newsletter and on website about ways of disposing of dog mess Regular check on current dog bins and frequency of emptying Consider if more bins are needed – are people willing to pay more or can we get sponsorship 	<p>Someone to write article for newsletter and website Parish Council Local Residents</p>	<p>Ongoing (8 dog waste bins now situated around the village. 2 more under consideration. SWA and RDC advice on disposal of own dog waste reported in newsletter.)</p>

Environment (continued)

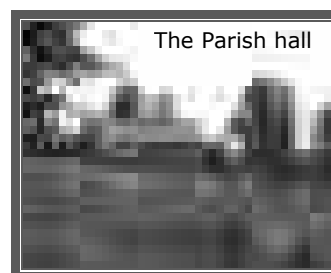
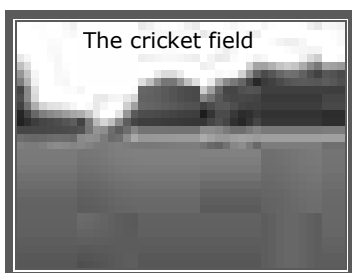
<p>Action: Tackle the vandalism and Graffiti problems in the Parish</p>  <p>New Moorsite</p>	<p>Why: 61% of respondents to the adult survey expressed concern about vandalism. 53% of primary school children identified this as the problem most in need of solutions</p>	<p>How:</p> <ul style="list-style-type: none"> • Graffiti removal Kit now available – contact Barbara - 751580 • Encourage good reporting of vandalism to Parish Council and Police • Discuss other possible solutions with the YDS on approaches to Young People 	<p>Who by: Barbara Balkham Parish Council CPSO's Youth Development Service (YDS)</p>	<p>When Partly achieved Graffiti Kit used on 10 occasions CPSO's patrolling early evening</p>
--	--	---	---	---

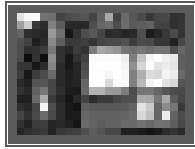


Young People and Children

<p>Action: Develop the play facilities in the Parish</p> <p>(Could include cycle track, basket ball and half sized football pitch for youngsters to play on and new play equipment for all ages)</p>	<p>Why: 63% of respondents (460 people) want improved play facilities. 76 of our primary school children put this as their highest priority</p>	<p>How:</p> <ul style="list-style-type: none"> • Explore grants available for children's play equipment. • Seek advice from ROSPA • and Action in Rural Sussex 	<p>Who by: Parish Council ROSPA Action in Rural Sussex School Residents WCA</p>	<p>When Timing depends on new development at the Down</p>
---	--	--	--	--

<p>Develop a Youth Club</p>	<p>75% of adult respondents (550 people) support the development of a youth club. 18% of the young people, in the 11 to 16 age group, wanted a youth club</p>	<ul style="list-style-type: none"> • Hold a meeting to discuss the plans with the village young people, interested parents and adults. • Invite youth workers from Action in Rural Sussex and YDS to facilitate and advise. 	<p>Young People Ruth Carter Parents with a vested interest Classroom assistants Action in Rural Sussex Youth Workers Interested Adults</p>	<p>In 2006</p>
-----------------------------	---	---	--	----------------





Communication

Action:

Set up a Parish Website to complement the Parish newsletter

Why:

62% of respondents have access to the internet and 52% supported the idea of setting up a Parish website

How:

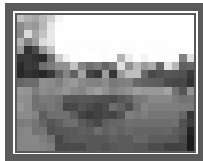
- Website editor identified
- Content & layout to be further developed
- www.westfieldparish.co.uk

Who by:

James Woodhead
Parish Council
Volunteers

When

Website now established
Further development by May 2006



Recreation

The Westfield Down proposal is a major initiative in our parish. It combines the requirement for us to have more housing, the need for the football club to have a new pitch and pavilion so that they can remain in the second division (and possibly move up), a new pavilion for the cricket club, a new base for scouts, cubs and beavers, and an area for developing a children's playground.

Action:

Support the development of the Westfield Down proposal

Form a partnership with the Steering group

Why:

80% (586 people) Support the development of new sports facilities at Westfield down

How:

- Make sure the relevant comments from the survey about the Down proposal are fed back to the steering committee, WCA and Parish Council
- Involve the volunteers from the "Getting Active Sheet"

Who by:

Westfield Action Plan Group
Sports Association
Steering Group

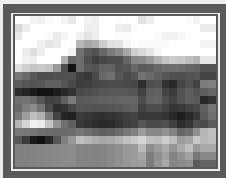
Steering Group;
Volunteers
WCA

When

ACHIEVED – relevant comments fed back to steering group

Once the feasibility study is complete and the project gets the green light

Explore the possibility of a Drop In Centre



56% (408 people) Would like to see a Drop-in centre for the community

- Hold a well publicised meeting for interested residents to investigate the possible location, purpose and frequency of opening

Those who volunteered on the "Getting Active Sheet";
Action Plan Group;
Age Concern

By November 2006

Consider what is available in the Parish for the elderly and if further groups etc are needed

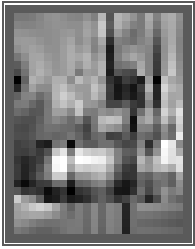
Identify a lead to take this forward

To utilise volunteers who have an interest in provision for the elderly and to plan for a growing older population

- Hold a meeting for those who volunteered to help with projects for the elderly
- Include Age Concern and leaders of established groups

Volunteers
Age Concern
Current leaders
Someone to co-ordinate the meeting

Depends on a co-ordinator



General Issues

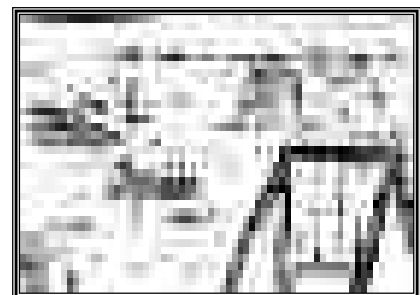
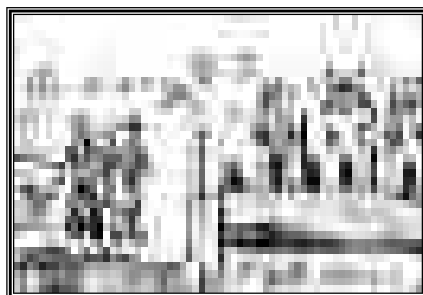
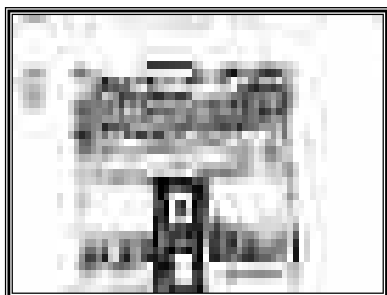
Action:	Why:	How:	Who by:	When
Maintain a database for all volunteers from the survey and future volunteers	To promote a self-help community and make best use of volunteered manpower.	<ul style="list-style-type: none"> On a computer with paper copies as necessary Comply with data protection Act 	Action Plan Group	Ongoing
Contact all who volunteered on the "Getting Active Sheet" with either a specific invitation or to say they will be contacted as needed	See above	<ul style="list-style-type: none"> Use computer database and funding from Parish Council for letters etc 	Sue France Other members of Action Group	Following publication of Action Plan

What happens now?

The plan will be delivered to all households in the parish at the end of February 2006. A full copy will also be sent to Rother District Council and East Sussex County Council. The first review of the plan will be in May 2006 and thereafter every four months.



Some ideas from our primary school children,



The Way forward

All Residents within the Parish are extremely welcome to join the Action Group and help bring Westfield's achievements to life! Whether you wish to get involved, volunteer for supporting a particular project or generally just wishing to know more about a specific subject raised – please come along.

Contact Barbara Balkham 751580 or Sue France 751029

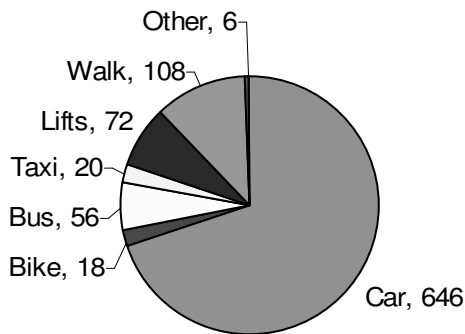
Results from the Questionnaire

The survey was very successful and the response very encouraging. Of the 1200 distributed 416 were completed and 731 residents participated either as individuals or as members of a family group. A further 182 responses were received from the children at Westfield School and 40 from the teenagers.

Transport

1.

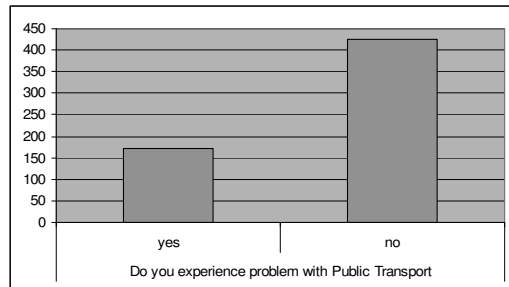
You mostly travel by:



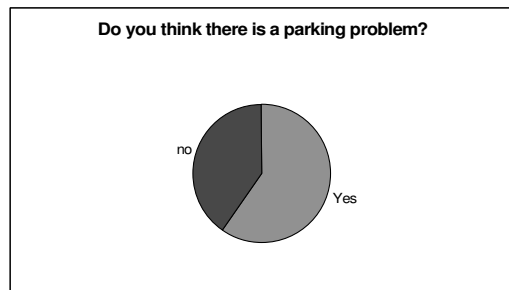
2. **Would you like to see changes regarding roads and vehicles in any of the following ways?**

Reduced speed limit **485** Enforced speed limit **418** Safer crossings **349** Road conditions **192** More parking **207**

3.



4.



5. **Would you like the lanes around Westfield Parish to be GREEN lanes? ie 20mph and priority for Walkers/ cyclists/ horse riders** Yes **392** No **193**

6. **If you have a bike but rarely use it, why is this?** Dangerous roads **170** Lack of cycle paths **152** Cars speeding **161** Steep hills **42** Weather **35** Other **72**

7. **Would you be willing to be a volunteer driver?** Yes **9** No **625**

Housing

8. **Are you looking for accommodation in the Parish?** Yes **24** No **670**

9. **Type of accommodation**

First time buyer **6** smaller house **18**

10. **Are members of your close family wanting to move back into the parish?** Yes **28** No **670**

11. **Type of accommodation needed**

Affordable rented **6** Other rented **2** First time buyer **10** Sheltered **3** Smaller housing **16** Larger housing **6**

12. **Comments on building**

- Already reached saturation.
- Protect AONB's and SSSI's.
- Do not make it part of Hastings.
- No more industrial development.
- Services already stretched:
- Lack of police.
- GP full up.
- School under pressure.
- Sewage system.
- Volume of traffic.
- Protect affordable housing for the young.
- Protect our village.

Community Safety

13. **Do you belong to a Neighbourhood Watch Scheme?**

Yes **373** No **258**

14. **Would you like to see street lighting in Westfield?**

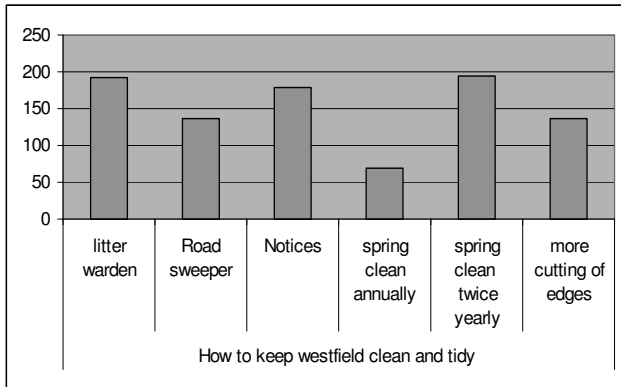
Yes **262** No **414**

15. **If there was a "walking bus" scheme, to get children to school, would your family use it?**

Yes **42** No **76** NA **596**

Environment

16.



17. Do you use recycling centres?

Yes 580 No 128

18 Which type?

Bottle bank 540 Can bank 280 Paper & cardboard 470 Clothing 262 Plastic 300 Garden waste 136

19 comments on recycling

- Information on location needed.
- Where do you take cardboard?
- Not cost effective.
- Make it part of weekly collection for the elderly.
- Use doorstep boxes as for newspaper.
- Sites in village – Pub car parks.
- Permanent bottle bank as mobile soon filled.
- Local facilities needed.

20 Does Westfield suffer from any of the following disturbance?

Traffic noise 180 Noise pollution 94 light pollution 66 Vandalism 446 Abandoned vehicles 240 Fireworks 156 Motorbikes 168 Helicopters 22

21 Are you concerned about dog fouling in the Parish?

Yes 416 No 286

22 Do you think we need more dog bins?

Yes 358 No 272

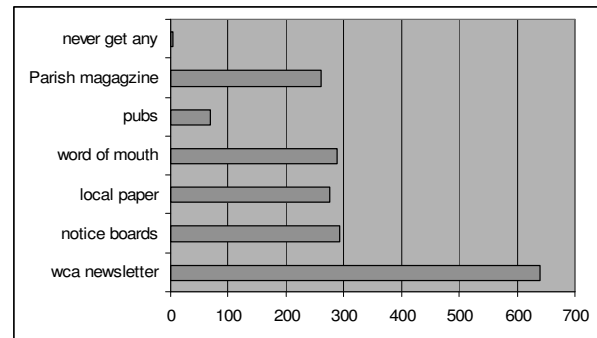
23 What do you think should be done to help protect and enhance the local environment of Westfield?

- Better public transport.
- Control parking.
- Stop fly tipping.
- More litter and dog bins.
- Public toilets.
- Post Office.
- Enforce speed limits.
- Enforce parking restrictions.
- Protect green fields.
- No more new building.
- Doctor's list full.
- Village Policeman.

- No tolerance for bad behaviour and vandalism.
- Keep pavements and footpaths clear.
- Use enforcement notices.
- The shop is an eye sore – broken windows and blinds.
- Street lighting for A28.
- Develop a Village Green.
- More village events.
- More road crossings.
- Bring back the Post Office.
- Build the by-pass.
- We need a Police patrol and parental control.

Communication

24 Where do you get details of Parish events?



25. Do you have access to the internet?

Yes 452 No 230

26 Do you think Westfield should have a web site?

Yes 380 No 236

27. If the school made their computer suite available in the evenings would you use it?

Yes 54 No 601

Young People and Children

28. Please give details of any concerns that you have for young people in Westfield and what action you feel can be taken to reduce these concerns

- Nowhere to go in the evening.
- Bring back parish field for young to meet.
- We need better bus links.
- Parents must participate in youth activities.
- They drive too fast.
- There is an element of young people that do not appreciate the village or community.
- Some evening policing is essential.
- No decent play area for mountain bikes or skateboards.
- Street warden.
- We need communication between pensioners and youth.
- Provision of more facilities will not cure bad behaviour.

- Don't blame all teenagers as badly behaved.
- Playground with shelter, skateboarding, basketball and big wall needed.
- "There is nothing to do" is not an excuse for bad behaviour.
- Youth club with plenty of helpers and funding.
- There is a drug problem in Westfield, the dealers should be prosecuted.
- Youngsters need help and things to do, clubs, sports, leisure.

29. Would you like to see improved facilities and safety in the children's play areas?

Yes **460** No **58**

30. Would you like to see one good quality site for new play equipment?

Yes **418** No **86**

Where do you suggest it is sited?

- Improved play areas.
- Needs to be visible to deter vandalism.
- Needs to be properly secured with fence.
- Should include a picnic table.
- Move to middle of Parish field.
- Play area in corner of sports field too isolated.
- Re-site football and reclaim field for all.
- Suggested sites: bowling green, surgery, swings, school, tennis courts, opposite church and top of Heathlands.

31. Would you be in favour of a skate boarding facility in the Village?

Yes **282** No **294**

32. Do you support the creation of a Youth Club in the Village?

Yes **550** No **46**

Recreation

33. Do you support the proposed development of some of the field next to the surgery for a new Sports Pavilion and football ground, and linked to the cricket ground?

Yes **586** No **72**

34. Are you in favour of combining all the sporting activities into one overall sports association?

Yes **484** No **92**

35. Would you like to see the development of a Drop-In centre somewhere in the village for tea or coffee?

Yes **408** No **202**

36. Are there any other suggestions you would like to make to improve the leisure and recreational activities in the village?

- Where is the money coming from?
- New pavilion should be for sports, leisure and youth.
- The church could do more and be more friendly.
- Other ideas; more church concerts, cinema club, dial-a-ride as in Rye.
- All activities will need better bus links.

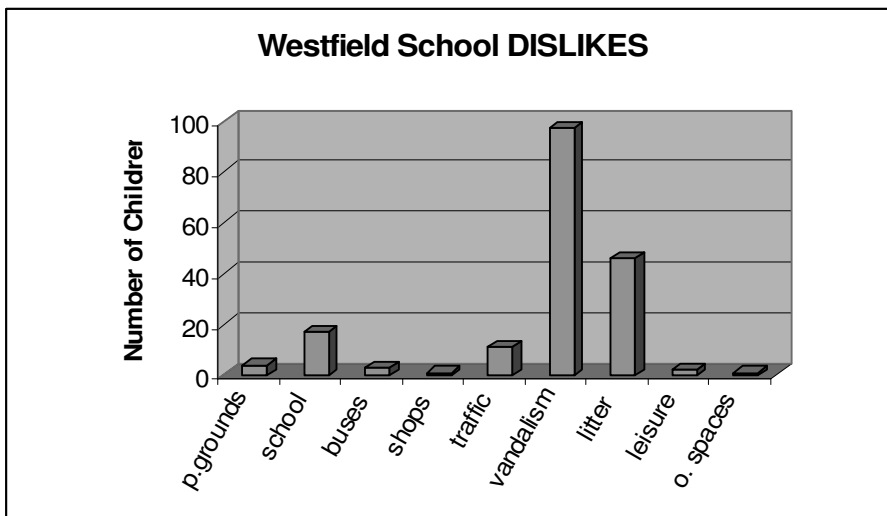
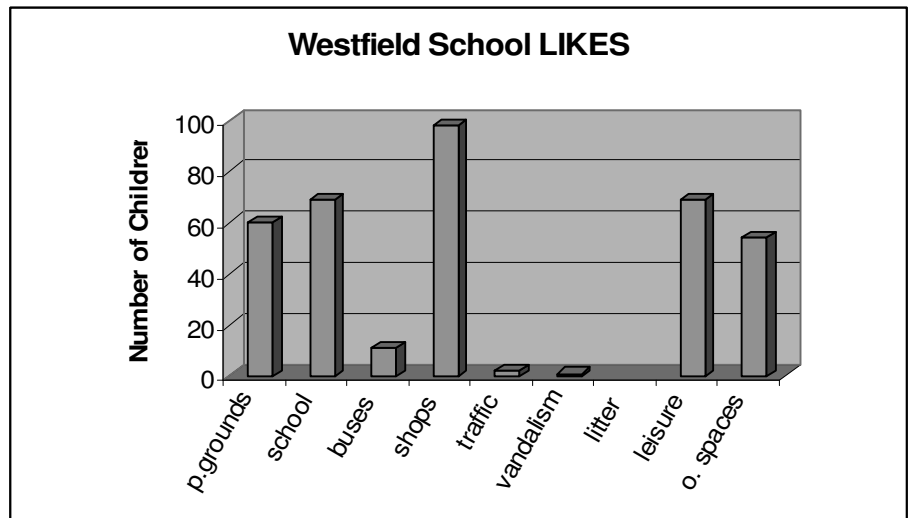
37. And Finally. Do you have any other comments, suggestions, ideas about future developments in Westfield?

- Any future development must be for the good of all residents, not just greedy developers.
- NO more new building.
- Bring back the post office, even part-time.
- Not too sterile.
- We need a local police presence.
- Must look after wild plants and animals – we share the planet.
- More cycle tracks / footpaths.
- Keep forty foot lorries and coaches out of lanes e.g. Moat Lane.
- Don't forget the elderly.
- Youth work top priority, skills clubs needed such as: Cooking – make products for sale; Art; Mechanics – motorbikes; Gardening; Judo; Drums etc.
- Toilets in the village.
- Village Green.
- Car Park.

Westfield School Questionnaire

In our primary school, 6 out of 7 classes took part in the survey, a total of 182 children. They were asked to choose two things they really liked, and one thing they disliked from a list of nine photographs depicting aspects of living in Westfield. They also had a free choice section where they were encouraged to tell us about anything they really liked about Westfield that wasn't shown in the photographs, and/or to tell us about one change they would make, or to give their reasons for their choices. Depending on the ages of the children concerned, this free choice section varied in presentation.

The results overleaf give an idea of the responses in each section.



Westfield Youth Survey

40 surveys were completed by Claverham Community College and Robertsbridge School students during April 2005. Their responses were as follows,

1. What do you like about living in Westfield?

Quiet/Countryside **17** The people **4** The park **5** The football pitch **3**

2. What don't you like about living in Westfield?

No youth club **1** No sport **3** Nothing to do **9** Not enough shops **2** Litter **3** speeding **2** vandalism **4** No street lighting **3**

3. If you could make a change to the bus service what would it be?

More regular **4** More frequent **6** Tidier **4** Free for kids **4** More destinations **4**

4. When you leave home/get married/have a family would you like to live in Westfield?

Yes **14** No **6** Don't know **2** If it's changed **3** Maybe **2**

5. What new facilities/clubs/activities would you like to see in Westfield?

Youth club **6** Sports club **3** More shops **4** Better play equipment **10** Cycle routes **4** 5 a side pitch **4**
Basketball court **1** Badminton **1** Drama club **1**

Acknowledgements

We would like to thank all those who have helped with the Action Plan process so far:- the original steering group, AIRS, all who completed the questionnaires, Claverham, Robertsbridge and Westfield Schools- their children and staff, the survey analyst (Professional Marketing Services), the groups of volunteers who helped with collating and choosing actions, the Parish Council for the funding, the WCA for providing a forum for information exchange, and the Newsletter team for doorstep delivery of the survey and this plan.

Westfield Yesterday

In the 11th century **Westfield** appeared as Westwelle in the Domesday Book, and was described as having a pit for "trial by water". The village was owned at that time by the Count of Eu. In 1251 the responsibility for the Parish was granted to the monks of Battle Abbey. **Westfield** is one of the villages in the area where the old village centre is quite a distance away from the church. This is likely to have been caused by the Black Death of 1348. The settlement that used to be based around the church may have moved because of the number of plague victims in the churchyard. The church of **St John the Baptist** is of Norman origin. Its role at the centre of village life and worship over the centuries has meant that the original small church has grown and now has many different architectural features including a 12th century Norman arch and a 13th century font. Its south door is iron-banded, made of oak, and dated 1542. The lych-gate was erected in 1887 in memory of a local child who had died and is guarded at each corner by a carved angel. Many years ago the angels lost parts of their noses to vandalism. In front of the church stands the War Memorial commemorating our young men and women lost in both world wars. It was dedicated at a special service held in 1921 and stands next to the **Jubilee Oak Tree** planted to celebrate Queen Victoria's Jubilee. **Church Place Farm**, near to the church, was once part of the Manor of Westfield. It was once moated and the responsibility of Battle Abbey. Village legend has it that a tunnel connected the house to the church. **Beggars Corner**, at a sharp bend in the A28 as you leave the village to the south, was the original site of the gated entrance to the lands of **Westfield Manor**, owned by the monks of Battle Abbey. It was here that needy beggars waited for alms.



The Plough public house stands in an area known as **The Moor** where many properties dating from the 17th century still remain. This was a thriving commercial area with a forge and wheelwright at its centre. Iron working was an important aspect of commercial life in Westfield for many years. **Crowham Manor** was once owned by Richard Farnden, a famous Sussex iron master. **Forge Stream and Forge Field** form part of this manor showing the iron works connection. Our oldest house is thought to be **Pattleton's Farm** which retains some 14th century features. **Spraysbridge** house is 17th century and lies on the 1066 walk and on the edge of an old Roman road. This road leads from the site of Roman iron workings on **Platnix Farm** to Sedlescombe.



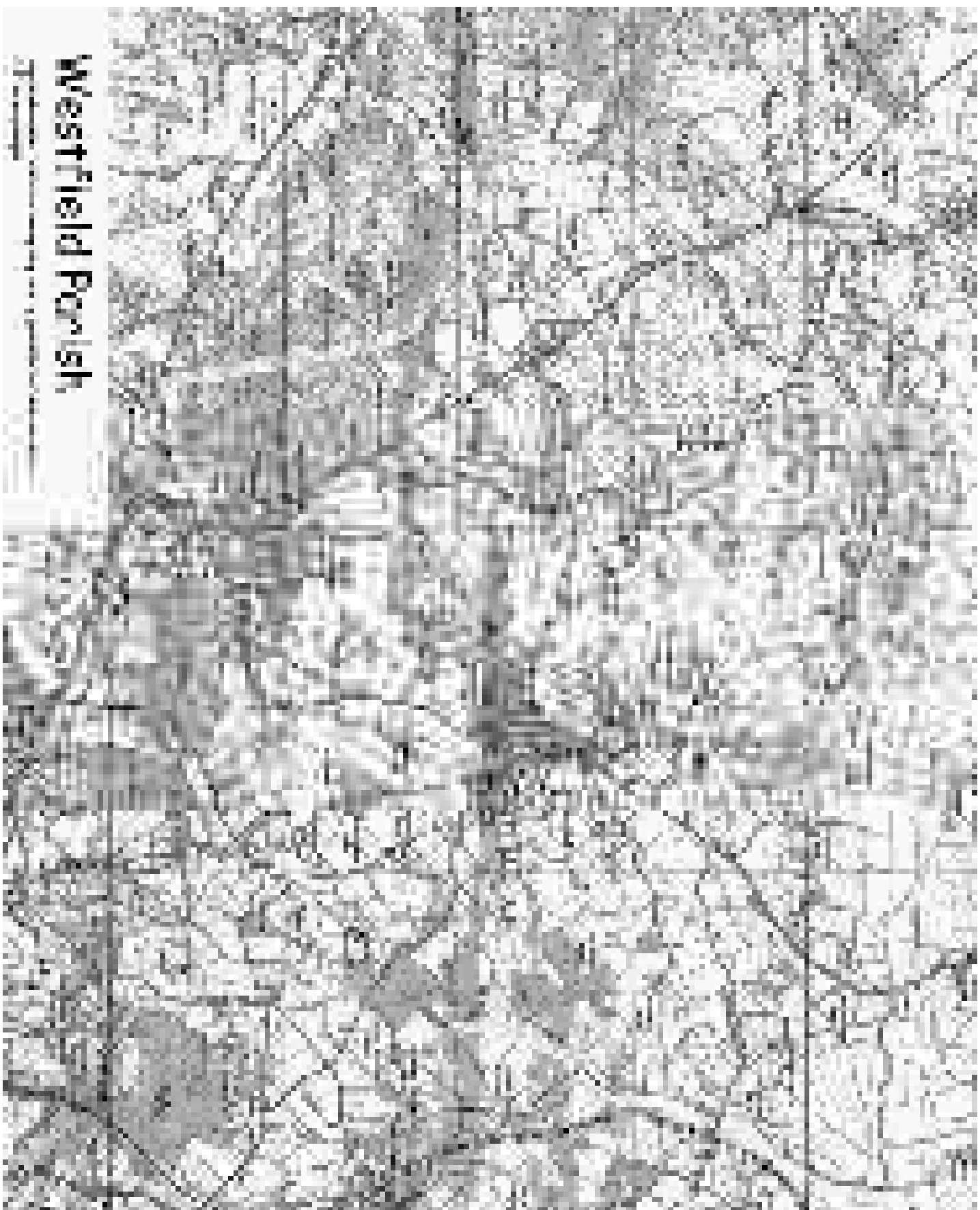
The village sign was erected to commemorate the year 2000 and stands close to the the crossroads once known as **Bullseye Corner**. On the opposite side of the road a small beer house has been replaced by a public house which recently changed its name to "**The Old Courthouse**". The pub car park was previously the site of an old black mill. On November 5th 1908, Westfield's last windmill was burnt down. As it was the evening of the village Bonfire Society's torch light procession, the society fell under suspicion even though there was no real evidence. Next to the car park stands **Archers' butchers shop**, a thriving village business, which has been in the same family since 1935. This weather-boarded building was part of the original milling complex.



The Methodist Chapel was built in 1851 on land licensed to Crowham manor. Extensive refurbishment was carried out to the interior, including fitting three modern stained glass windows depicting the livelihoods of former members. The windows were removed when the chapel closed in 2004.

Westfield County Primary School is a vital part of our community. The main building was built in Victorian times, around 1877. It was extensively altered in 1954 and extended in 2001 and 2005. It shares the use of our **Community Hall** which was built as a joint venture between the Community Association and the County Council. Johnny Morris, a famous children's TV presenter, opened the hall in 1984.





Westfield Parish

LA 70080

Transport

Action:

Explore the possibility of Green Lanes (ie 20mph & priority for walkers/cyclists/riders)

Present findings to the Action group to discuss feasibility

Why:

Our lanes are becoming increasingly busy; the safety of other road users is at risk. 54% of survey respondents (392 people) supported the idea of Green Lanes around Westfield

Update January 2007

The recognised name for these lanes is Quiet Lanes. There are several examples around the country where areas have introduced them. East Sussex County Council has shown some interest but this is a long term action which will need more commitment by the County Council.

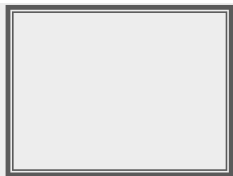
Gather information about Public Transport and the long term strategy for the Parish

Present findings to the Action Group to consider if further work is needed

24% of respondents (172 people) experienced problems with using public transport

Other areas are also concerned about this and AIRS are encouraging groups to get together to share ideas and work towards a realistic community transport plan.

A recent initiative is to provide a local bus to take people to Rye or Battle once a month. Research into the interest for this is currently being carried out.



Find a solution to the village parking problems

53% (389 people) identified car parking as a problem in the village. The most commonly identified sites were The Surgery, village halls and the roads around the school, especially at school drop-off and pick-up times

Various solutions have been considered but nothing viable has been found yet.

Make pathways more accessible to allow people to walk into the



village

Comments were received about overgrown hedges and obstructed footways causing difficulties to pedestrians

Some work has been done on the Westfield lane path. The "Green Gym" team are keen to help with the refurbishment of the footpath from New Cut down to the valley.

Transport (continued)

Consider routes for cyclists:-
a) Beggars Corner to The Plough- through Fish Ponds lane to Cricket ground, down drive to A28 (possible new roundabout), Mill Lane to Cottage Lane and along to Sedlescombe

b) Link with Marsh Cycle routes via Doleham Halt (good train service).

322 respondents declared that dangerous roads or lack of cycle paths prevent them cycling more

ESCC have been supportive. A cycling Officer has been out to meet us and has pedalled around the parish. He favoured the school and the line from Beggars Corner to the new sports ground as the hub of the scheme. A link with Hastings and the hospital is being investigated, plus a link to Sedlescombe .

The Doleham Halt scheme is on hold as the trains are not stopping here at present.

Make Doleham Lane, and Lower Lidham Hill Green Lanes

Revisit a "Wheelies" type car service as BACT looks set to close down

To match identified travel needs of residents with those willing to help provide transport

A questionnaire was included in the Community Newsletter asking for those needing transport to get in touch. As no one indicated a need, this project has ceased, for the time being.

Housing

Action:

Ensure all new housing in the parish has a certain percentage available for Westfield families, such as the Westfield Down proposal – see under Recreation

Why:

Most comments received were about already over-stretched infra structures and not wanting any further housing. If houses must be built, consideration should be given to current residents' needs (previous developments have resulted in an influx of people from outside the immediate area putting additional strain on services)

Update January 2007

Housing continues to be a contentious issue. There are government directives on numbers of housing that must be built in the South East, but there are local anxieties about any more houses in the Parish. Some housing will be built and the Action Group aims to ensure a percentage of new houses will be available for local people.

Community Safety

Action:

Establish wider coverage of Neighbourhood Watch

Why:

51% of respondents already belong to a neighbourhood watch scheme. Of those who do not, many expressed an interest in knowing more

Update January 2007

The email address for neighbourhood watch was circulated widely and continues to be in the Community Newsletter on a regular basis.

Environment

This is a really important issue for most people. There is a need to keep our environment clean and pleasant and this will be an area where the parishioners can work together.

Action:

Organise a "Spring Clean" once or twice a year

Set up a system whereby people regularly do their own "patch"

Why:

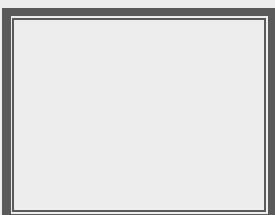
There was a high level of support for all suggested remedies for tidying Westfield. 264 people favoured an annual or bi-annual community clean-up

Update January 2007

There have now been three events, the last of these was 14th April 2007. All have been successful and well supported. This year a team also worked on the "Twitten". Several people have agreed to keep their "patch" tidy on a regular basis. More volunteers are always welcome.

Dates for 2007:-
Autumn Tidy up 8th September

Tackle the Litter problem in the parish



The litter problem was the most frequently indicated local environment issue

As Above

Make sure the grass

To preserve endangered flowers

A detailed plan of the rare wild flowers

edges are not cut where it is safe to do so, to preserve orchids and wildlife

has been completed. The contractors will continue to be made aware of the protected sites.

Investigate more frequent bottle bank emptying or permanent bank

A permanent plastic bottle recycling unit was installed and is well used. Lately the bank has become full very quickly, with overflow bottles being left lying around. The situation will change when kerbside collections begin.

Action:
Reduce local disturbance

Why:
8 potential causes of disturbance were listed in the survey. Of these, vandalism (61%), abandoned cars (33%) and traffic noise (25%) caused the most discomfort

Update January 2007
The main issue last year was noise disturbance from youngsters with motor bikes, mostly riding illegally. The CSO's have been helpful in tackling this issue. RDC's excellent service in removing abandoned vehicles has been very successful in keeping this nuisance at bay.

Explore changes needed to the way we deal with Dog Fouling



60% of respondents expressed concern about dog fouling and 49% would like more dog waste bins

Last year, with the contract with Serco, this was much less of a problem. The new contract has not yet been agreed but the new refuse company have advised that dog waste bags can also be placed in normal rubbish bins.

Tackle the vandalism and Graffiti problems in the Parish



61% of respondents to the adult survey expressed concern about vandalism. 53% of primary school children identified this as the problem most in need of solutions

The Graffiti kit has been well used by Barbara Balkham. If parishioners identify any new areas of concern please let her know.

Young People and Children

Action:
Develop the play facilities in the Parish

(Could include cycle track, basket ball and half sized football pitch for youngsters to play on and new play equipment for all ages)

Why:
63% of respondents (460 people) want improved play facilities. 76 of our primary school children put this as their highest priority

Update January 2007
This project is linked to the Down proposals and is quite well advanced. We have had detailed plans from 2 companies and are currently having plans for the landscaping of the area developed.

Develop a Youth Club

75% of adult respondents (550 people) support the development of a youth club. 18% of the young people, in the 11 to 16 age group, wanted a youth club

Emma Barker for AIRS has been meeting youngsters in the Parish and considering future plans. We have not had any local volunteers who are willing to take this forward.

Communication

Action:

Set up a Parish Website to compliment the Parish newsletter

Why:

62% of respondents have access to the internet and 52% supported the idea of setting up a Parish website

Update January 2007

The parish Web site is established and is being regularly kept up to date. It will be developed further in the near future.

Recreation

The Westfield Down proposal is a major initiative in our parish. It combines the requirement for us to have more housing, the need for the football club to have a new pitch and pavilion so that they can remain in the second division (and possibly move up), a new pavilion for the cricket club, a new base for scouts, cubs and beavers, and an area for developing a children's playground.

Action:

Support the development of the Westfield Down proposal

Form a partnership with the Steering group

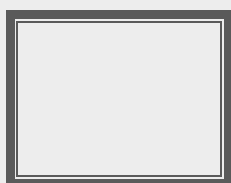
Why:

80% (586 people) Support the development of new sports facilities at Westfield down

Update January 2007

Roger Carrier and the steering group have been working hard on this project. It will have great benefit to the Parish in terms of freeing up the Parish Field, better facilities for the footballers of all ages and a decent play area for young people.

Explore the possibility of a Drop In Centre



56% (408 people) Would like to see a Drop-in centre for the community

Patricia Marston is leading this project and she is currently gathering ideas and forming plans.

Consider what is available in the Parish for the elderly and if further groups etc are needed

Identify a lead to take this forward

To utilise volunteers who have an interest in provision for the elderly and to plan for a growing older population

This action is being explored alongside the "drop In" idea.

General Issues

Action:

Maintain a database for all volunteers from the

Why:

To promote a self-help community and make best use of

Update January 2007

A data base has been set up

survey and future volunteers	volunteered manpower.	
Contact all who volunteered on the "Getting Active Sheet" with either a specific invitation or to say they will be contacted as needed	See above	A large number of the volunteers have now been contacted as the various projects have got under way.

Transport

Action:

Explore the possibility of Green Lanes (ie 20mph & priority for walkers/cyclists/riders)

Present findings to the Action group to discuss feasibility

Why:

Our lanes are becoming increasingly busy; the safety of other road users is at risk.

54% of survey respondents (392 people) supported the idea of Green Lanes around Westfield

Update May 2008

The recognised name for these lanes is Quiet Lanes. There are several examples around the country where areas have introduced them. East Sussex County Council has shown some interest but this is a long term action which will need more commitment by the County Council. There has been no further progress on this Action this year.

Gather information about Public Transport and the long term strategy for the Parish

Present findings to the Action Group to consider if further work is needed

24% of respondents (172 people) experienced problems with using public transport

The proposed community bus to take people to Rye or Battle was not supported so was not followed up.

No further Actions have been considered at present. There is now a Rother wide Transport Action Group to which we are invited.

Find a solution to the village parking problems



53% (389 people) identified car parking as a problem in the village. The most commonly identified sites were The Surgery, village halls and the roads around the school, especially at school drop-off and pick-up times

Various solutions have been considered but nothing viable has been found yet.

This continues to be a problem but no further action has been considered.

Make pathways more accessible to allow people to walk into the village



Comments were received about overgrown hedges and obstructed footways causing difficulties to pedestrians

There has been progress over the year on this action. The county footpath team have made some significant improvements to the path from New Cut to the Valley.

A team of Volunteers are now in place to work on footpaths under the guidance of the County Team. The volunteers will have their own tool kit and will be out and about soon.

Consider routes for cyclists:-
a) Beggars Corner to The Plough- through Fish Ponds lane to Cricket ground, down drive to A28 (possible new roundabout), Mill Lane to Cottage Lane and along to Sedlescombe

b) Link with Marsh Cycle routes via Doleham Halt (good train service). Make Doleham Lane, and

322 respondents declared that dangerous roads or lack of cycle paths prevent them cycling more

A group of interested volunteers has now been formed. They will be working on this action over the coming year.

Doleham Halt station has been closed so this route is no longer viable.

Lower Lidham Hill Green
Lanes

Revisit a "Wheelies" type car service as BACT looks set to close down

To match identified travel needs of residents with those willing to help provide transport

This project has ceased following the lack of support for a new scheme.

Housing

Action:

Ensure all new housing in the parish has a certain percentage available for Westfield families, such as the Westfield Down proposal – see under Recreation

Why:

Most comments received were about already over-stretched infra structures and not wanting any further housing. If houses must be built, consideration should be given to current residents' needs (previous developments have resulted in an influx of people from outside the immediate area putting additional strain on services)

Update May 2008

This year a housing survey will be completed by Action in Rural Sussex. If a need for specific housing is identified the Parish Council may consider a small development for Westfield residents which will always be kept for Westfield families.

The Government and District/County council still have targets for more housing. Our quota should be covered by the planned development at the Down.

The issues regarding infrastructure are being explored by the relevant utility companies.

Community Safety

Action:

Establish wider coverage of Neighbourhood Watch

Why:

51% of respondents already belong to a neighbourhood watch scheme. Of those who do not, many expressed an interest in knowing more

Update May 2008

The email address for neighbourhood watch was circulated widely and continues to be in the Community Newsletter on a regular basis. The police are beginning to look at the possibility of establishing traditional neighbourhood watch schemes with a pilot in Rye. Another project related to this is the "No Cold Calling Zone". Anyone who would like to join the scheme should contact Joan Downing on 752463.

Environment

This is a really important issue for most people. There is a need to keep our environment clean and pleasant and this will be an area where the parishioners can work together.

Action:

Organise a "Spring Clean" once or twice a year

Set up a system whereby people regularly do their own "patch"

Why:

There was a high level of support for all suggested remedies for tidying Westfield. 264 people favoured an

Update May 2008

This continues to be a well supported project with a Spring Clean and Autumn Tidy up each year. A large number of volunteers also continue to clear up their patch on a regular basis.

annual or bi-annual community clean-up

Tackle the Litter problem in the parish



The litter problem was the most frequently indicated local environment issue

As Above

Make sure the grass edges are not cut where it is safe to do so, to preserve orchids and wildlife

To preserve endangered flowers

A detailed plan of the rare wild flowers has been completed. The contractors will continue to be made aware of the protected sites.

Investigate more frequent bottle bank emptying or permanent bank

Kerbside collections are now a regular feature. The Parish Council is considering the need to have a plastic recycle unit in Churchfields. The bottle bank continues to be well used. Some residents have asked for it to be re-sited where it is less visible. The Parish Council is also considering screening of the area if re-siting is not possible.

Action:

Reduce local disturbance

Why:

8 potential causes of disturbance were listed in the survey. Of these, vandalism (61%), abandoned cars (33%) and traffic noise (25%) caused the most discomfort

Update May 2008

The main issue last year was noise disturbance from youngsters with motor bikes, mostly riding illegally. The PCSO's have been helpful in tackling this issue. RDC's excellent service in removing abandoned vehicles has been very successful in keeping this nuisance at bay. There have been less incidents reported to the Parish Council during 07/08.

Explore changes needed to the way we deal with Dog Fouling



60% of respondents expressed concern about dog fouling and 49% would like more dog waste bins

A new contract has been established this year and extra dog bins have been placed around the village. The bins are emptied regularly and there have been no reported concerns. Some inconsiderate people continue to fail to pick up after their dogs.

Tackle the vandalism and Graffiti problems in the Parish

61% of respondents to the adult survey expressed concern about

The Graffiti kit has been well used by Barbara Balkham. If parishioners identify any new areas of concern please let her know.



vandalism. 53% of primary school children identified this as the problem most in need of solutions

Young People and Children

Action:

Develop the play facilities in the Parish

(Could include cycle track, basket ball and half sized football pitch for youngsters to play on and new play equipment for all ages)

Why:

63% of respondents (460 people) want improved play facilities. 76 of our primary school children put this as their highest priority

Update May 2008

The Parish Council have identified funding for improving the facilities at the recreation area (opposite the church). The Action Plan Group have suggested suitable equipment and further funding is being sort.

Develop a Youth Club

75% of adult respondents (550 people) support the development of a youth club. 18% of the young people, in the 11 to 16 age group, wanted a youth club

There has been no response from volunteers willing to run a youth club so the Action Plan Group has decided to hold 3 youth events this year – the first – a Street Art Graf workshop – was held on 12th April, which was very successful. Two further events are at the planning stage.

Communication

Action:

Set up a Parish Website to compliment the Parish newsletter

Why:

62% of respondents have access to the internet and 52% supported the idea of setting up a Parish website

Update May 2008

The parish Web site is established and is being regularly kept up to date.

Recreation

The Westfield Down proposal is a major initiative in our parish. It combines the requirement for us to have more housing, the need for the football club to have a new pitch and pavilion so that they can remain in the second division (and possibly move up), a new pavilion for the cricket club, a new base for scouts, cubs and beavers, and an area for developing a children's playground.

Action:

Support the development


Why:

80% (586)

Update May 2008

Progress has been disappointingly slow on this

of the Westfield Down proposal	people) Support the development of new sports facilities at Westfield down	project. The sale of the land has now been agreed verbally so outline planning permission will be sought next.
Form a partnership with the Steering group		

Explore the possibility of a Drop In Centre	56% (408 people) Would like to see a Drop-in centre for the community	This project is on hold due to ill health of the leader.
		



Consider what is available in the Parish for the elderly and if further groups etc are needed	To utilise volunteers who have an interest in provision for the elderly and to plan for a growing older population	This action is being explored alongside the "drop In" idea.
Identify a lead to take this forward		

General Issues

Action:	Why:	Update May 2008
Maintain a database for all volunteers from the survey and future volunteers	To promote a self-help community and make best use of volunteered manpower.	A data base has been set up

Contact all who volunteered on the "Getting Active Sheet" with either a specific invitation or to say they will be contacted as needed	See above	A large number of the volunteers have now been contacted as the various projects have got under way.
--	-----------	--

Transport

Action:	Why:	Update May 2009
<p>Explore the possibility of Green Lanes (ie 20mph & priority for walkers/cyclists/riders)</p> <p>Present findings to the Action group to discuss feasibility</p>	<p>Our lanes are becoming increasingly busy; the safety of other road users is at risk.</p> <p>54% of survey respondents (392 people) supported the idea of Green Lanes around Westfield</p>	<p>The recognised name for these lanes is Quiet Lanes. There are several examples around the country where areas have introduced them. East Sussex County Council has shown some interest but this is a long term action which will need more commitment by the County Council.</p> <p>There has been no further progress on this Action this year.</p>
<p>Gather information about Public Transport and the long term strategy for the Parish</p> <p>Present findings to the Action Group to consider if further work is needed</p>	<p>24% of respondents (172 people) experienced problems with using public transport</p>	<p>Most of our transport actions require work across county. We now have a volunteer who attends the Rother Transport Action Group who reports back on wider issues and ensures Westfield's ideas are heard.</p>
<p>Find a solution to the village parking problems</p> 	<p>53% (389 people) identified car parking as a problem in the village. The most commonly identified sites were The Surgery, village halls and the roads around the school, especially at school drop-off and pick-up times</p>	<p>No Long term solution has been found to the village parking problems but recently the local Community Police Support Officer has helped by informing parents dropping children off at school about safer parking.</p>
<p>Make pathways more accessible to allow people to walk into the village</p> 	<p>Comments were received about overgrown hedges and obstructed footways causing difficulties to pedestrians</p>	<p>A Group of volunteers has been working on various projects around the village for the last year. East Sussex County Council has provided equipment and training. The projects have included a new kissing gate & a new stile in the valley, minor repair to a bridge, path clearance behind New Cut and signage.</p>
<p>Consider routes for cyclists:-</p> <p>a) Beggars Corner to The Plough- through Fish Ponds lane to Cricket ground, down drive to A28 (possible new roundabout), Mill Lane to Cottage Lane and along to Sedlescombe</p> <p>b) Link with Marsh Cycle routes via Doleham Halt</p>	<p>322 respondents declared that dangerous roads or lack of cycle paths prevent them cycling more</p>	<p>These actions need a committed volunteer to make progress.</p> <p>The Action Plan group are considering looking for Grant funding for someone to do some research into the feasibility of this action.</p>

(good train service).

Make Doleham Lane, and Lower Lidham Hill Green Lanes

Revisit a "Wheelies" type car service as BACT looks set to close down

To match identified travel needs of residents with those willing to help provide transport

The Action Plan Group feel there is still an unidentified need for help with this. Possibilities will be explored in the future via the HUB.

Housing

Action:

Ensure all new housing in the parish has a certain percentage available for Westfield families, such as the Westfield Down proposal – see under Recreation

Why:

Most comments received were about already over-stretched infra structures and not wanting any further housing. If houses must be built, consideration should be given to current residents' needs (previous developments have resulted in an influx of people from outside the immediate area putting additional strain on services)

Update May 2009

This year a housing survey was completed by Action in Rural Sussex. A need for specific housing has been identified and the Parish Council is considering a small development for Westfield residents which will always be kept for Westfield families.

Community Safety

Action:

Establish wider coverage of Neighbourhood Watch

Why:

51% of respondents already belong to a neighbourhood watch scheme. Of those who do not, many expressed an interest in knowing more

Update May 2009

The email address for neighbourhood watch was circulated widely and continues to be in the Community Newsletter on a regular basis.

Another project related to this is the "No Cold Calling Zone". Anyone who would like to join the scheme should contact Joan Downing on 752463.

Environment

This is a really important issue for most people. There is a need to keep our environment clean and pleasant and this will be an area where the parishioners can work together.

Action:

Organise a "Spring Clean" once or twice a year

Set up a system whereby


Why:

There was a high level of support for all suggested remedies for tidying Westfield.

Update May 2009


This continues to be a well supported project with a Spring Clean and Autumn Tidy up each year. A large number of volunteers also continue to clear up their patch on a regular basis.


people regularly do their own "patch"	264 people favoured an annual or bi-annual community clean-up
---------------------------------------	---

<p>Tackle the Litter problem in the parish</p> 	<p>The litter problem was the most frequently indicated local environment issue</p>	<p>As Above</p>
--	---	-----------------

<p>Spring Into Westfield</p>	<p>To improve the roadside display in the Spring</p>	<p>A group of Volunteers planted some bulbs last October. This project will continue with new bulbs added this year both in the village and at Baldslow Down.</p>
------------------------------	--	---

<p>Investigate more frequent bottle bank emptying or permanent bank</p>	<p>This action is now considered complete as the bottle bank is well used and emptied regularly. The Kerbside collection of plastic bottles has been very successful.</p>
---	---

<p>Explore changes needed to the way we deal with Dog Fouling</p> 	<p>60% of respondents expressed concern about dog fouling and 49% would like more dog waste bins</p>	<p>The new contract has been very successful. The number of bins has increased from 8 to 10. The bins are emptied regularly and there have been no reported concerns.</p> <p>Some inconsiderate people continue to fail to pick up after their dogs.</p>
---	--	--

<p>Tackle the vandalism and Graffiti problems in the Parish</p> 	<p>61% of respondents to the adult survey expressed concern about vandalism. 53% of primary school children identified this as the problem most in need of solutions</p>	<p>The Graffiti kit has not been needed much this year. If parishioners identify any new areas of concern please let Barbara Balkham know - 751531</p>
---	--	--

Young People and Children

<p>Action:</p> <p>Develop the play facilities in the Parish</p>	<p>Why:</p> <p>63% of respondents (460 people) want improved play</p>	<p>Update May 2009</p> <p>The new equipment at the recreation ground was installed in December. This has been a huge success and continues to be well used and appreciated by the children and young people.</p>
--	--	---

facilities. 76 of our primary school children put this as their highest priority

Develop a Youth Club

75% of adult respondents (550 people) support the development of a youth club. 18% of the young people, in the 11 to 16 age group, wanted a youth club

As there was no response from volunteers willing to run a youth club the Action Plan Group held 3 youth events last year. This year a film night was held in January which was less well attended than hoped for. Action In Rural Sussex have agreed to hold several youth events this summer which will also be used to canvas the young people on ideas for future events.

Communication

Action:

Set up a Parish Website to compliment the Parish newsletter

Why:

62% of respondents have access to the internet and 52% supported the idea of setting up a Parish website

Update May 2009

The parish Web site is being re-launched this year. It is planned to make this a community based site which can be used by all local organisations. The basic designs have been completed and funding is now being sort. We hope to launch the new site in the autumn.

Recreation

The Westfield Down proposal is a major initiative in our parish. It combines the requirement for us to have more housing, the need for the football club to have a new pitch and pavilion so that they can remain in the second division (and possibly move up), a new pavilion for the cricket club, a new base for scouts, cubs and beavers, and an area for developing a children's playground.

Action:

Support the development of the Westfield Down proposal

Form a partnership with the Steering group

Why:

80% (586 people)
Support the development of new sports facilities at Westfield down

Update May 2009

Progress has been disappointingly slow on this project. Outline planning permission has been applied for. It is hoped that there will be significant progress in the next year.

Explore the possibility of a Drop In Centre



56% (408 people)
Would like to see a Drop-in centre for the community

The HUB was launched in April with a lively well attended opening event. It is currently operating every Friday from 10am to noon at the Old Court House PUB. Information leaflets, computer access, book swap and refreshments are available.

Consider what is available in the Parish for the elderly and if further

To utilise volunteers who have an interest in provision for the elderly and to

This action is being explored alongside the "drop In" idea.

groups etc are needed

plan for a
growing older
population

Identify a lead to take
this forward

General Issues

Action:

Maintain a database for all
volunteers from the
survey and future
volunteers

Why:

To promote a
self-help
community and
make best use of
volunteered
manpower.

Update May 2009

A data base has been set up

New volunteers are always welcome please
contact Sue France – 751029 if you would like
more information about any aspects of the
Action Plan or if you would like to be involved.

Action Plan Update 2010

The Action Plan is now 4 years old. Some of the projects are continuing with minimal change, some are complete and a few are yet to make any progress. The successes this year are the establishing of the new website, the setting up of a Youth Club and work done with the Rural Access to Services Project (RASP).

Transport

<p>Action: Explore the possibility of Green Lanes (ie 20mph & priority for walkers/cyclists/riders)</p> <p>Present findings to the Action group to discuss feasibility</p>	<p>Why: Our lanes are becoming increasingly busy; the safety of other road users is at risk. 54% of survey respondents (392 people) supported the idea of Green Lanes around Westfield</p>	<p>Update May 2010 The recognised name for these lanes is Quiet Lanes. There are several examples around the country where areas have introduced them. East Sussex County Council has shown some interest but this is a long term action which will need more commitment by the County Council. There has been no further progress on this Action this year.</p>
<p>Gather information about Public Transport and the long term strategy for the Parish</p> <p>Present findings to the Action Group to consider if further work is needed</p>	<p>24% of respondents (172 people) experienced problems with using public transport</p>	<p>Most of our transport actions require work across county. We now have a volunteer who attends the Rother Transport Action Group who reports back on wider issues and ensures Westfield's ideas are heard.</p>
<p>Find a solution to the village parking problems</p>	<p>53% (389 people) identified car parking as a problem in the village. The most commonly identified sites were The Surgery, village halls and the roads around the school, especially at school drop-off and pick-up times</p>	<p>No Long term solution has been found to the village parking problems.</p>

Make pathways more accessible to allow people to walk into the village



Comments were received about overgrown hedges and obstructed footways causing difficulties to pedestrians

The footpath volunteer group continue to monitor the paths in the parish and ESCC has helped with some path improvements.

Transport (continued)

Consider routes for cyclists:-
a) Beggars Corner to The Plough- through Fish Ponds lane to Cricket ground, down drive to A28 (possible new roundabout), Mill Lane to Cottage Lane and along to Sedlescombe

b) Link with Marsh Cycle routes via Doleham Halt (good train service). Make Doleham Lane, and Lower Lidham Hill Green Lanes

322 respondents declared that dangerous roads or lack of cycle paths prevent them cycling more

These actions need a committed volunteer to make progress. The Action Plan group are considering looking for Grant funding for someone to do some research into the feasibility of this action.

Revisit a "Wheelies" type car service as BACT looks set to close down

To match identified travel needs of residents with those willing to help provide transport

Work is currently underway to explore the transport needs in the Parish via the Rural Access to Services Project (RASP).

Housing

Action:
Ensure all new housing in the parish has a certain percentage available for Westfield families, such as the Westfield Down proposal – see under Recreation

Why:
Most comments received were about already over-stretched infra structures and not wanting any further housing. If houses must be built, consideration should be given to current

Update May 2010
Last year a housing survey was completed by Action in Rural Sussex. A need for specific housing was identified and the Parish Council considered a small development for Westfield residents which will always be kept for Westfield families. Plans for this exception site are nearing completion and details will be available soon.

residents' needs.

Community Safety

Action:

Establish wider coverage of Neighbourhood Watch

Why:

51% of respondents already belong to a neighbourhood watch scheme. Of those who do not, many expressed an interest in knowing more

Update May 2010

The email address for neighbourhood watch was circulated widely and continues to be in the Community Newsletter on a regular basis.

Environment

This is a really important issue for most people. There is a need to keep our environment clean and pleasant and this will be an area where the parishioners can work together.

Action:

Organise a "Spring Clean" once or twice a year

Set up a system whereby people regularly do their own "patch"

Why:

There was a high level of support for all suggested remedies for tidying Westfield. 264 people favoured an annual or bi-annual community clean-up

Update May 2010

This continues to be a well supported project with a Spring Clean and Autumn Tidy up each year. A large number of volunteers also continue to clear up their patch on a regular basis.

Tackle the Litter problem in the parish



The litter problem was the most frequently indicated local environment issue

As Above

Spring Into Westfield

To improve the roadside display in the Spring

Volunteers added more bulbs to the village and Baldslow down areas in October. This project will continue again this year.

Investigate more frequent bottle bank emptying or permanent bank

This action is now considered complete as the bottle bank is well used and emptied regularly. The Kerbside collection of plastic bottles has been very successful.

Explore changes needed to the way we deal with Dog Fouling



60% of respondents expressed concern about dog fouling and 49% would like more dog waste bins

The Parish Council has recently changed its contract for emptying dog waste bins. Generally this is less of a problem but some inconsiderate people continue to fail to pick up after their dogs.

Tackle the vandalism and Graffiti problems in the Parish

61% of respondents to the adult survey expressed concern about vandalism. 53% of primary school children identified this as the problem most in need of solutions

The Graffiti kit has not been needed much this year. If parishioners identify any new areas of concern please let Barbara Balkham know - 751531

Young People and Children

Action:

Develop the play facilities in the Parish

Why:

63% of respondents (460 people) want improved play facilities. 76 of our primary school children put this as their highest priority

Update May 2010

The new equipment at the recreation ground has been a huge success and continues to be well used and appreciated by the children and young people.

Develop a Youth Club

75% of adult respondents (550 people) support the development of a youth club. 18% of the young people, in the 11 to 16 age group, wanted a youth club

A new Youth Group has now been established in the Parish. This has a good number of volunteers and is well supported by the young people. The RASP funding has been beneficial in supporting this project.

Communication

<p>Action: Set up a Parish Website to compliment the Parish newsletter</p> <p>Establish some new notice boards in the Parish.</p>	<p>Why: 62% of respondents have access to the internet and 52% supported the idea of setting up a Parish website</p>	<p>Update May 2010 The new website is a great asset to the Parish. Many thanks to those who maintain it. The RASP project has supported this project with some funding. The address is below if you haven't found it yet. www.westfieldvillage.co.uk</p> <p>This is a new project which has been supported by RASP funding. One new board will be erected at New Moorsite for local residents and one for the Young people at Geary Place (where the school bus stops).</p>
--	---	--

Recreation

The Westfield Down proposal is a major initiative in our parish. It combines the requirement for us to have more housing, the need for the football club to have a new pitch and pavilion so that they can remain in the second division (and possibly move up), a new pavilion for the cricket club, a new base for scouts, cubs and beavers, and an area for developing a children's playground.

<p>Action: Support the development of the Westfield Down proposal</p> <p>Form a partnership with the Steering group</p>	<p>Why: 80% (586 people) Support the development of new sports facilities at Westfield down</p>	<p>Update May 2010 Progress has been disappointingly slow on this project but we are hoping for more developments this year.</p>
<p>Explore the possibility of a Drop In Centre</p>	<p>56% (408 people) Would like to see a Drop-in centre for the community</p>	<p>The HUB has been a great success so far – thanks to all those involved. It continues to meet every Friday morning at the PUB. The Rural Access to Services Project (RASP) has provided funding and ideas to help develop the HUB as a centre for information.</p>



General Issues

Action:

Maintain a database for all volunteers from the survey and future volunteers

Why:

To promote a self-help community and make best use of volunteered manpower.

Update May 2010

A data base has been set up
New volunteers are always welcome please contact Sue France – 751029 if you would like more information about any aspects of the Action Plan or if you would like to be involved.

LO27 A CiLCA qualified officer understands the impact of positive community engagement.

Assessment criteria: The assessors check that you can

4.1 describe ways in which different groups in the community can influence decisions

4.2 suggest ways in which those who rarely join in can be encouraged to express a view.

The evidence

Submit proposals for community engagement that give different groups in the community, including those who rarely participate, the opportunity to influence decisions. This can be either an annotated council document or an explanation of 400 words.

Guidance

Modern local councils find ways in which people in the community can influence the council's decisions. Community engagement includes listening and finding out what people think about issues affecting the community. Proposals for community engagement should recognise the diversity of the local community and highlight ways in which people can communicate their ideas. Examples of such methods might include surveys, focus groups, workshops or social media. In particular you identify people who rarely participate (if ever) and show how they can be encouraged to express a view.

The council may have a document demonstrating these points. If so, you annotate it using the standard guidance and show how the criteria can be met. If there is no such document, you have 400 words (maximum 440) for an explanation covering all aspects of the task.

Westfield Parish Council utilises several methods for encouraging community engagement, allowing different groups to influence decisions. These include allowing the public to ask questions at council meetings. Meetings are advertised on notice boards, the website and FaceBook page, and the public are encouraged to attend.

Working Groups can include non-members, and this is a good way different community groups getting involved in projects. Council is currently organising a display to commemorate 100 years since Armistice Day. The Working Group includes members from the Historical Society and Community Association, and they are working with the school.

Similarly, Council is organising a poppy display in the centre of the village. The various community groups have been invited to contribute ideas and make poppies.. This is a real village project, bringing many of the community groups together.

Councillors recently purchased the telephone box in the village. Residents were asked what they would like to see the box used for, by completing a simple on-line survey, which was publicised using the website, newsletter and FaceBook. There was a good response with approximately 10% of residents completing the survey, and several people volunteering to help with the project. A working group will now be formed with Councillors and volunteers to move the project forward.

Council organises the annual Parish Assembly. All community groups are invited to have a display. A guest speaker is invited, to give a presentation on a subject of interest, e.g. policing in the community. The Chairman's report highlights the Council's work, planned projects, and questions are invited from the public. Council has a display, and a suggestion box encouraging people to advise

KATE DARBYSHIRE

of ideas and concerns. Volunteer awards are also presented, which promotes a sense of community spirit. This community event is well advertised and last year attended by over 100 people.

The relatively new use of FaceBook by Council, has proven to be very successful encouraging younger, working people to get involved in events and projects, and become Councillors. Historically Councillors and volunteers have tended to be retired. Using twitter and Instagram may encourage an even younger demographic to engage. Council is currently looking to set up a Clerk's surgery, where the Clerk will attend different groups to have informal chats with people from different groups, including; Youth Club, Community Hub, PTA coffee morning.

Given recent reductions in services provided by County and District Councils, Council may wish to consider a public consultation to ask what issues residents have. This may include asking if they would be prepared for an increase in precept to pay for additional services such as grass cuts and a community warden.

Word Count 436